



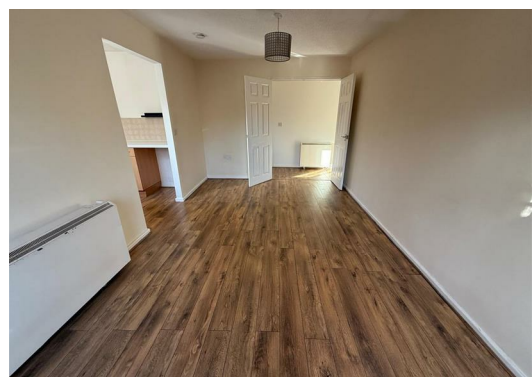
## Thorndale Court, M9 8PZ £1,200 PCM

This attractive and well-presented ground-floor apartment offers spacious and comfortable living in a highly convenient location. The property features a generous open-plan lounge and fitted kitchen, providing an ideal space for relaxing or entertaining. There are two double bedrooms, both offering excellent proportions, along with a modern three-piece bathroom suite with a shower over the bath.

The apartment benefits from double glazing, electric heating, secure intercom entry and on-site parking for residents.

Situated close to Manchester City Centre and offering easy access to major motorway links, this home is perfectly suited to professional couples, small families or those looking to downsize.

A fantastic property in a sought-after area. MUST SEE.



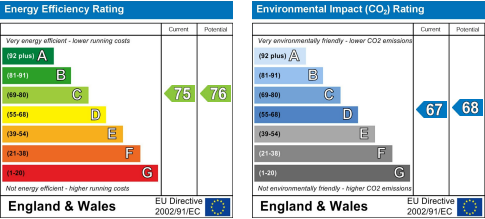


**Disclaimer:**

These particulars, whilst believed to be accurate are set out as a general guideline and do not constitute any part of an offer or contract. Intending Tenants should not rely on them as statements of representation of fact, but must satisfy themselves by inspection or otherwise as to their accuracy. Please note that we have not tested any apparatus, equipment, fixtures, fittings or services including gas central heating and so cannot verify they are in working order. Although we try to ensure accuracy, if measurements are used in this listing, they may be approximate. Therefore if intending Tenants need accurate measurements to order carpeting or to ensure existing furniture will fit, they should take such measurements themselves. Photographs are reproduced general information and it must not be inferred that any item is included for let with the property. Please contact 01706 823 131 for further details.

Viewing:

Viewing strictly by appointment through Lifestyle Sales and Lettings.



Head Office: 121 Whalley Road, Ramsbottom, Lancashire, BL0 0DG

Telephone: 01706823131 Email: enquiries@lifestylesalesandlettings.co.uk Website: www.lifestylesalesandlettings.co.uk